

DC50 Brushless Water Pump EWP-D50C2440'

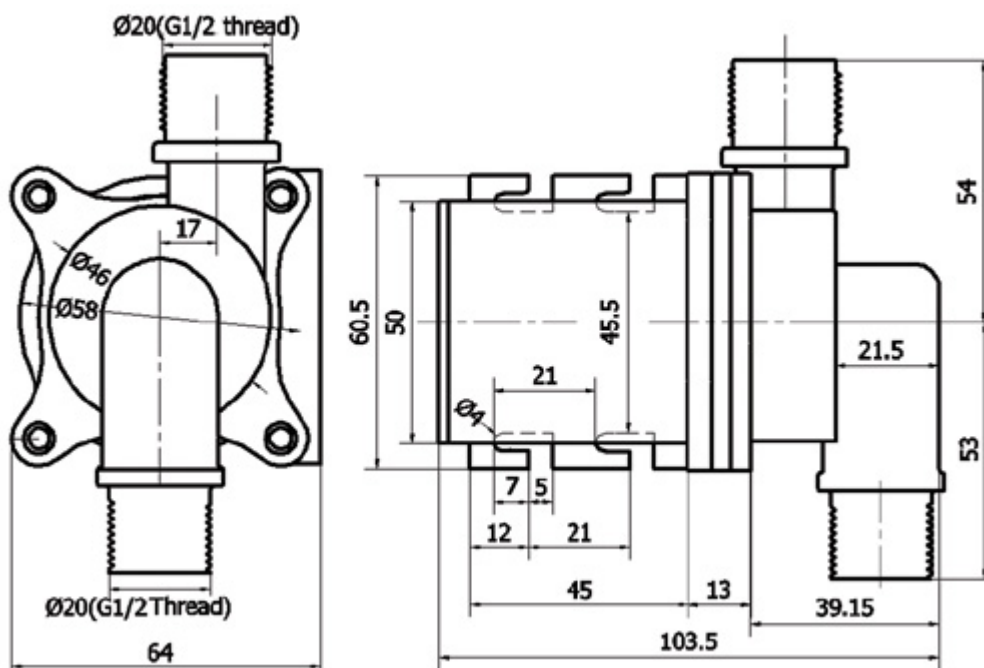
Features:

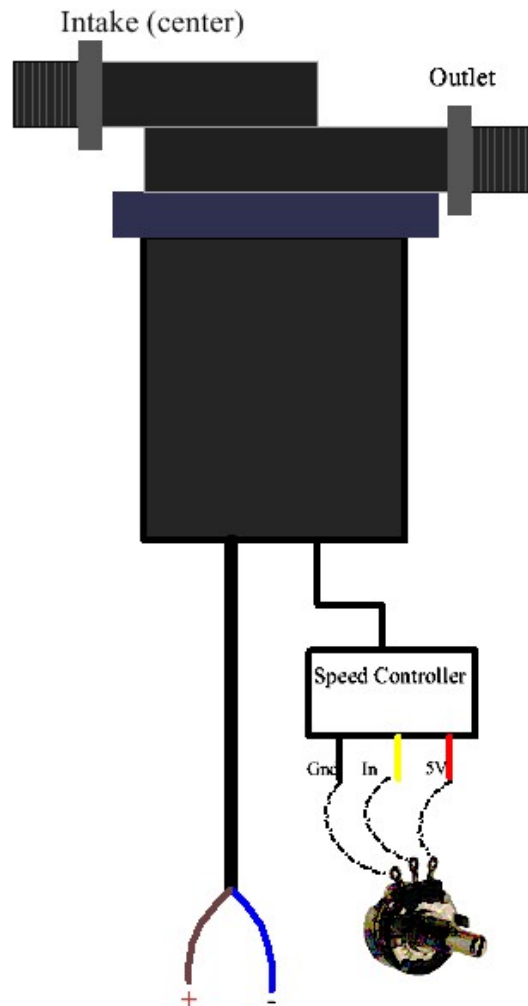
- High temperature handling up to 70°C/ 158°F
- High volume output
- Power is DC24V
- Heavy duty and 100% water sealed & submersible
- Long life for up to 6 years with normal use
- Low noise, 40db or less
- Pump water, oil, and gasoline



Specification

- Power: DC24V
- Current: 2.3A@24V
- Output: 35L/m (565 gal/hr)
- Vertical delivery: 4m (13ft)
- Self Prime: No
- Motor: DC 2 phase coil
- Power: 55Watt
- Speed control: None
- Intake: G1/2 (1/2")
- Outlet: G1/2 (1/2")
- Life span: > 20,000hrs @ 1600rpm~10,00rpm
- Noise: << 39dB
- Water Temp: 70°C/ 176°F (max)
- Operating Temp: <50°C
- Size(L*W*D): See "More images for the exact dimension"
- Weight (net): 16.0oz



**Connection:**

Connect the brown wire (+) to the positive terminal of a power supply and connect the blue wire to the negative terminal of the power supply. Note, the power supply must be capable to supply 4A or higher current in order for the pump to work properly.

Speed control (optional):

Connect a 10K Ohm potentiometer as picture shown above with yellow in the center tap. You can control the water flow rate by turning the knob of the potentiometer. If you don't need speed control but preferring full speed in all time, all you need to do is to tap the red wire to the yellow wire. Or, if you want to control it by a PC or by a microcontroller through TTL signal, the Gnd and the In are for the TTL control signal input.

Note, the pump is not self-prime so it must be either submersed or the intake must be filled up water. Make sure that there is no air between the intake and the water bank. Otherwise, the pump will not work properly.